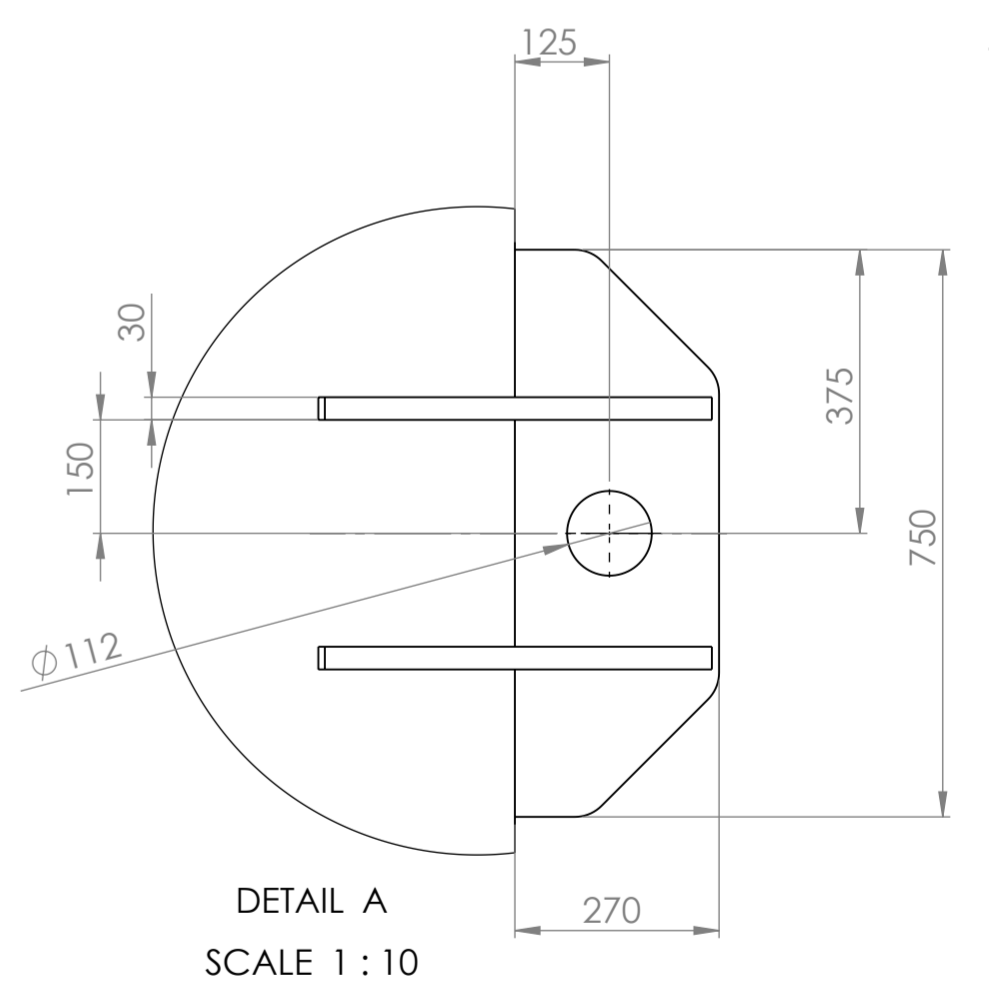
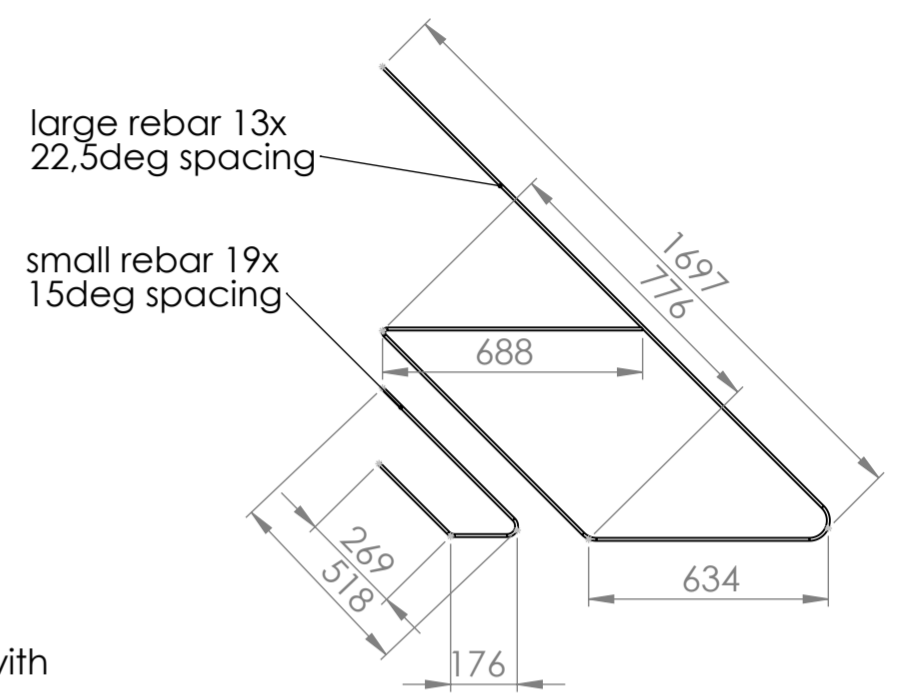
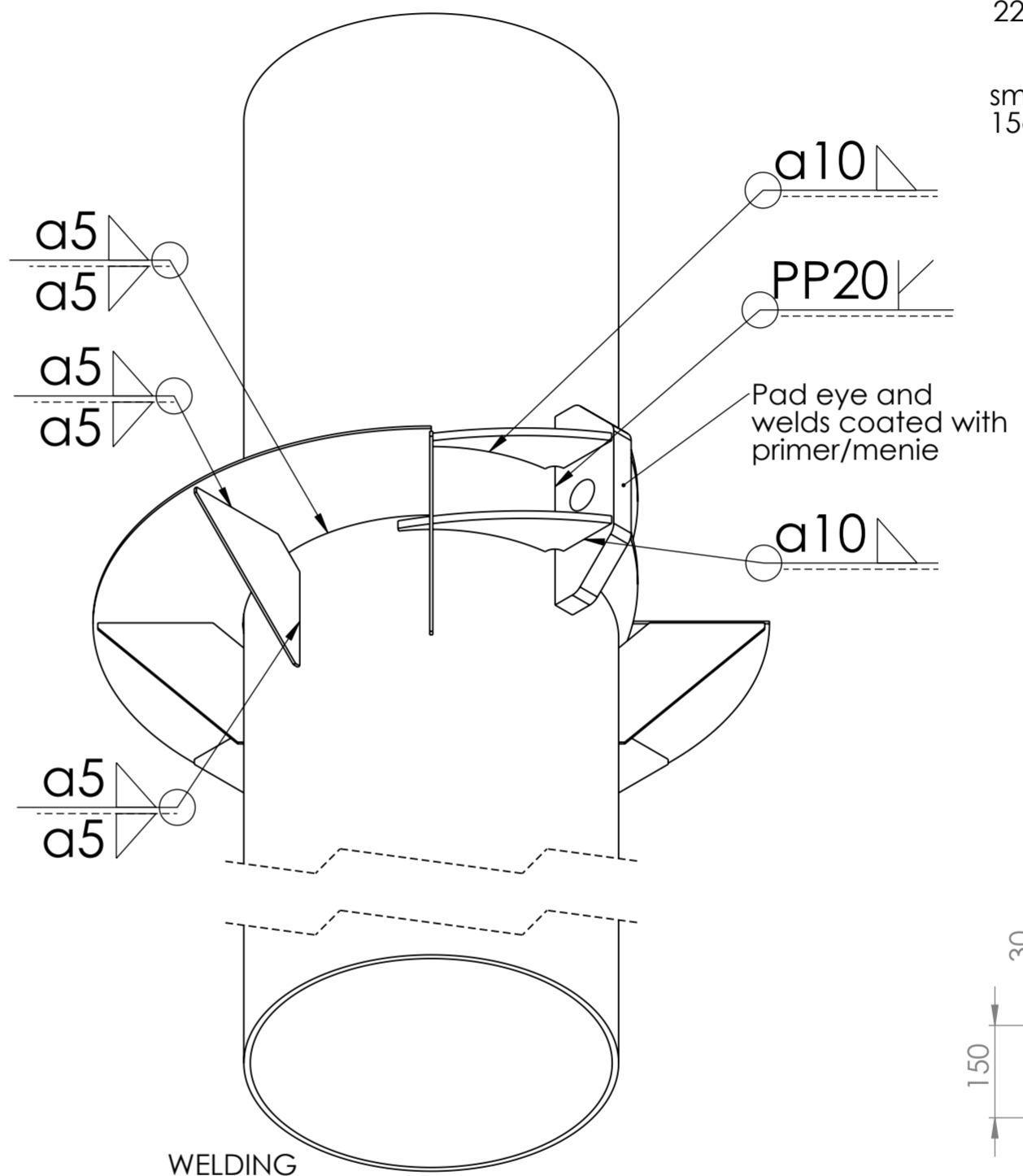
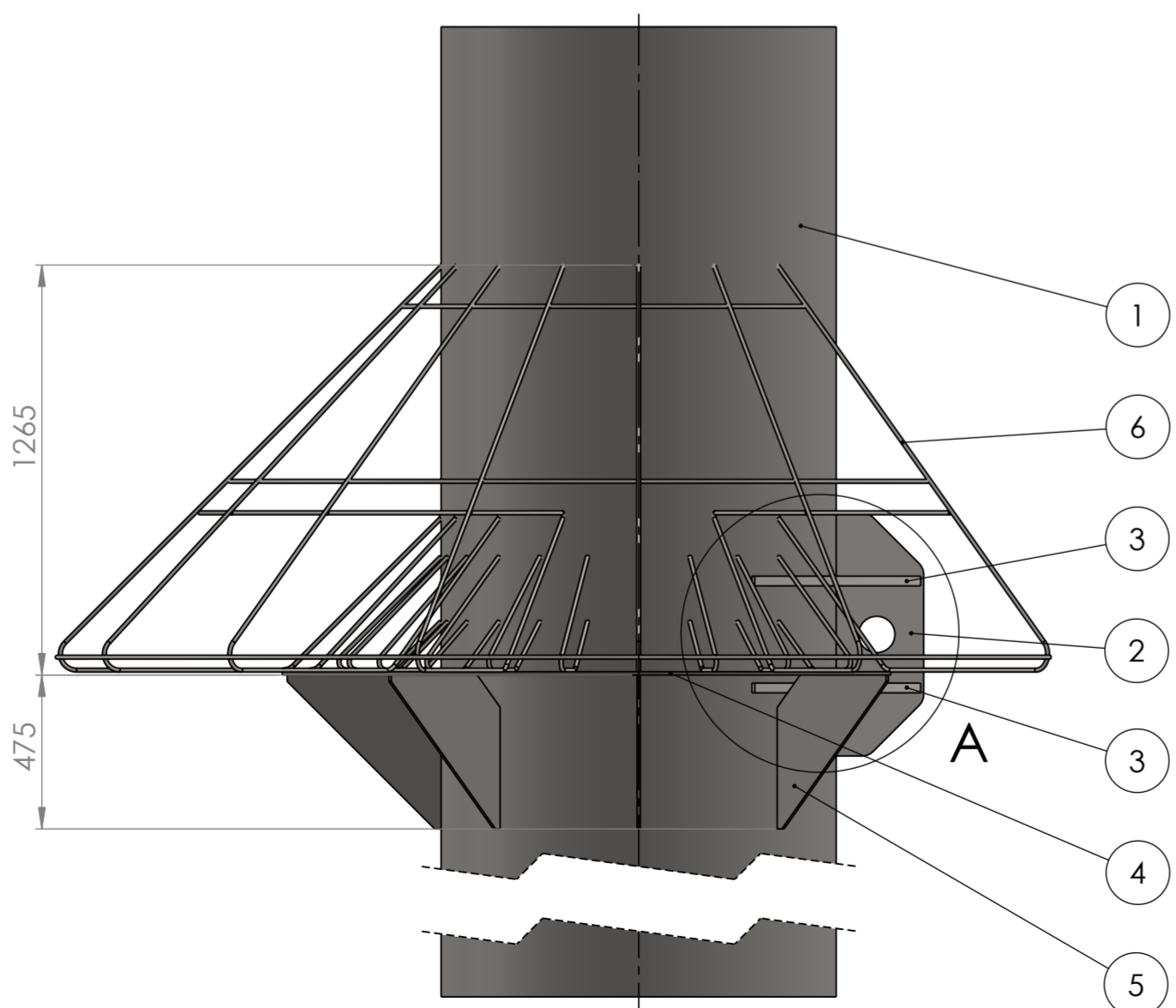
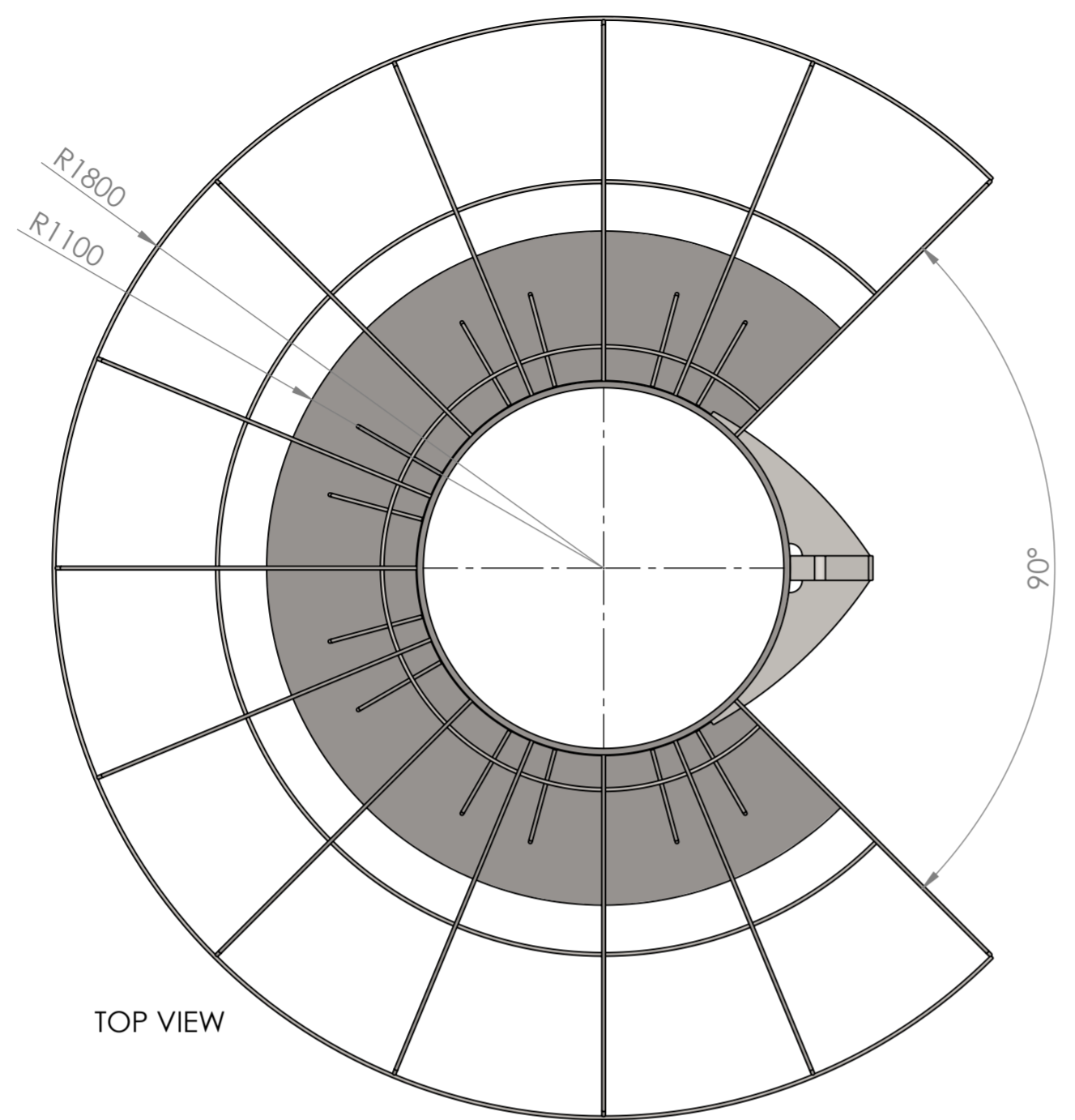
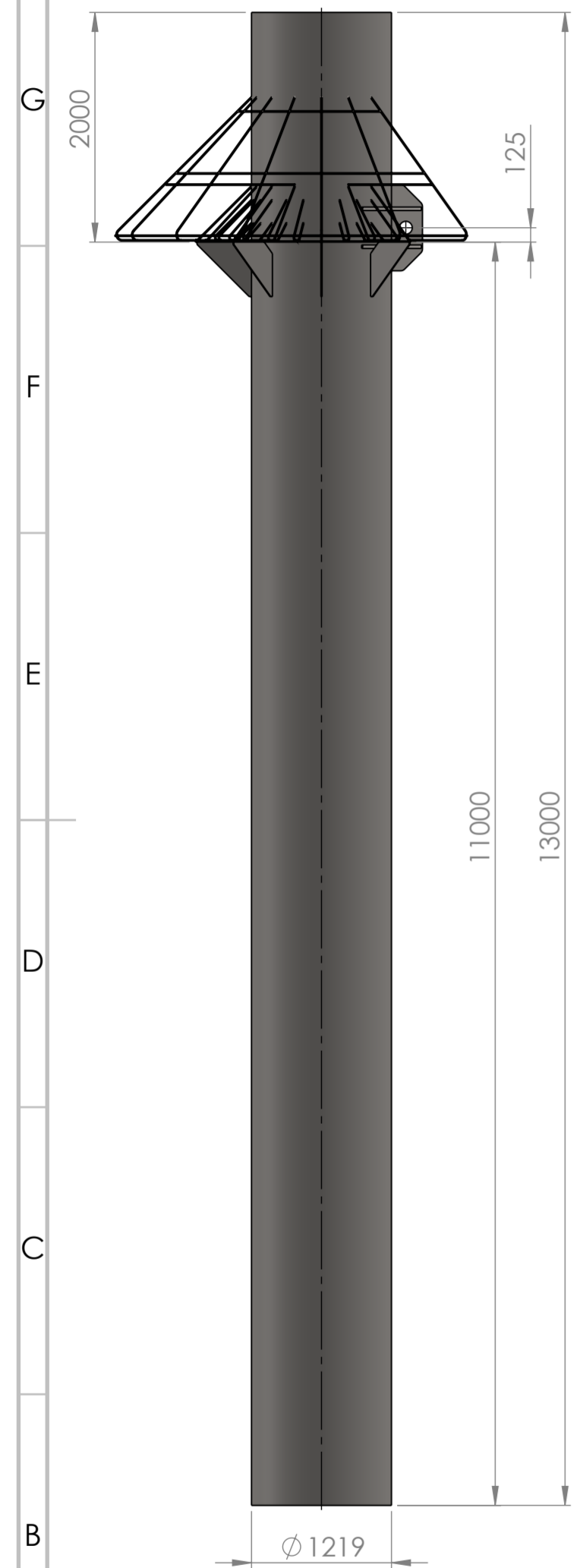


SIDE VIEW

BOM Table					
ITEM NO.	PART NUMBER	THICKNESS	MATERIAL	QTY.	
1	001-Pile	∅ 1219x21mm l=13m	L485ME	1	
2	004A_Pad_eye	80mm	S355J2G3 or S355NLO	1	
3	004B_Pad_eye	30mm	S355J2G3 or S355NLO	4	
4	005_Circular_plate	10mm	S355	1	
5	006-Support_plate	10mm	S355	7	
6	007-Rebar_cage	∅ 12mm steel, l~75m	S235 / S355	1	



Unless Otherwise Stated:
All Dimensions: mm
allowed deviation on dimensions according to DIN ISO 2768-mK
Tolerances acc. ISO 285-2
Surface acc. to DIN ISO 1302

FINISH: tbs

DEBURR AND BREAK SHARP EDGES

3rd angle projection

REVISION: -

This drawing and any information or descriptive material set out on it are the confidential and copyright property of Aqitec Projects BV. © and MUST NOT BE DISCLOSED, COPIED, LOANED IN whole or part or used for any purpose without the written permission of Aqitec Projects BV.

Legal owner:

aqitec

DWG NO. 000-Mini_pile_NSF#1

SCALE: 1:20

SHEET 1 OF 1

WEIGHT: 8326.18 kg

Q.A.

MATERIAL:

NAME SIGNATURE DATE

DRAWN I. W. Wieling 27/10/2023

CHK'D

APPV'D

MFG

Q.A.

A2