

# SATELLIET GROEP

*Since 2006 Satellietgroep explores through arts and culture how the sea and waterways influence people, communities and environments.*

[www.satellietgroep.nl](http://www.satellietgroep.nl)

# THE NETHERLANDS BELOW SEA LEVEL



# ARTIST IN RESIDENCY @BADGAST



## BADGAST

Badgast is built of 2 stacked used sea containers by Refunc Recycle Architects and is located in the surf community F.A.S.T. on the coast of the North Sea in The Hague (NL). The residency program hosts artistic research on the pressures on public, social and cultural use of waterfronts in order to develop new concepts and strategies of more social and natural sustainability of future sea and coastal urban areas.

# CINEMA AT SEA @BADGAST

## COLLECTING

Since 2009 Satellietgroep programs the international artist in residency 'Badgast' in The Hague (NL) to enable artists and scientists to do fieldwork, work on site with local communities and experts to map out, collect and research coastal transitions and to generate new works and perspectives. Satellietgroep collects and interconnects these works for presentations that contribute to public and professional awareness.

# NOW WAKES THE SEA FILM FESTIVAL @BATUMI BEACH (GE)

## INTERCONNECTING

Since 2012 'Now Wakes The Sea' is the international cultural exchange program with traveling film festivals initiated by Satellietgroep in collaboration with cultural partners. During artists in residencies in countries surrounding the North Sea and Black Sea new works are developed and combined with existing works that reflect on the impact of coastal transitions in past, present and future on people, communities and environments.

# COLLABORATION + COMMUNICATION = EDUCATION



‘Destination coast’ becomes a quality brand!  
Artists, scientists, policymakers and entrepreneurs publicly share their knowledge and skills.

# **PUBLIC AWARENESS** **'ZEESPIEGEL'** **@NEW BOULEVARD** **SCHEVENINGEN**

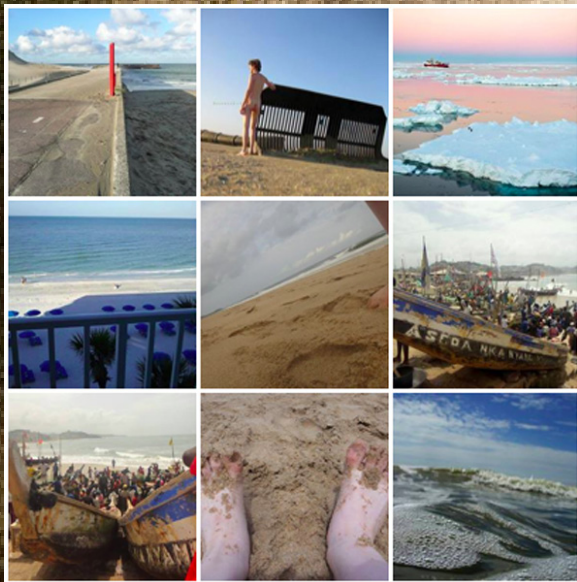


# PROFESSIONAL AWARENESS INTERNATIONAL COASTAL CONFERENCE LITTORAL (BE)



# RAISING PUBLIC AND PROFESSIONAL AWARENESS

## KUSTWEEK ZUID-HOLLAND



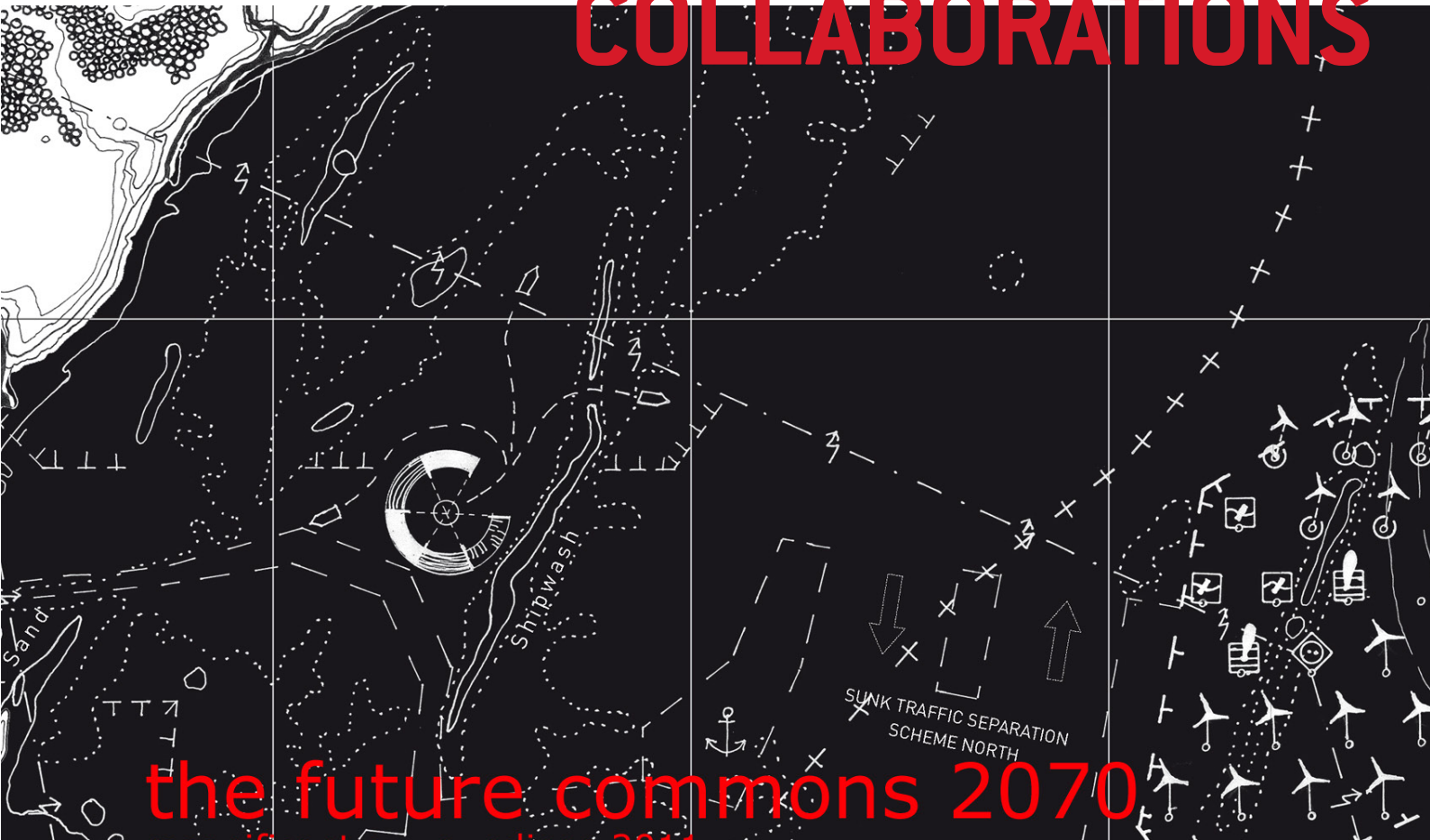
# HOLOCENE TO ANTHROPOCENE



‘In the anthropocene era humanity is  
affecting the earth like a force of nature’

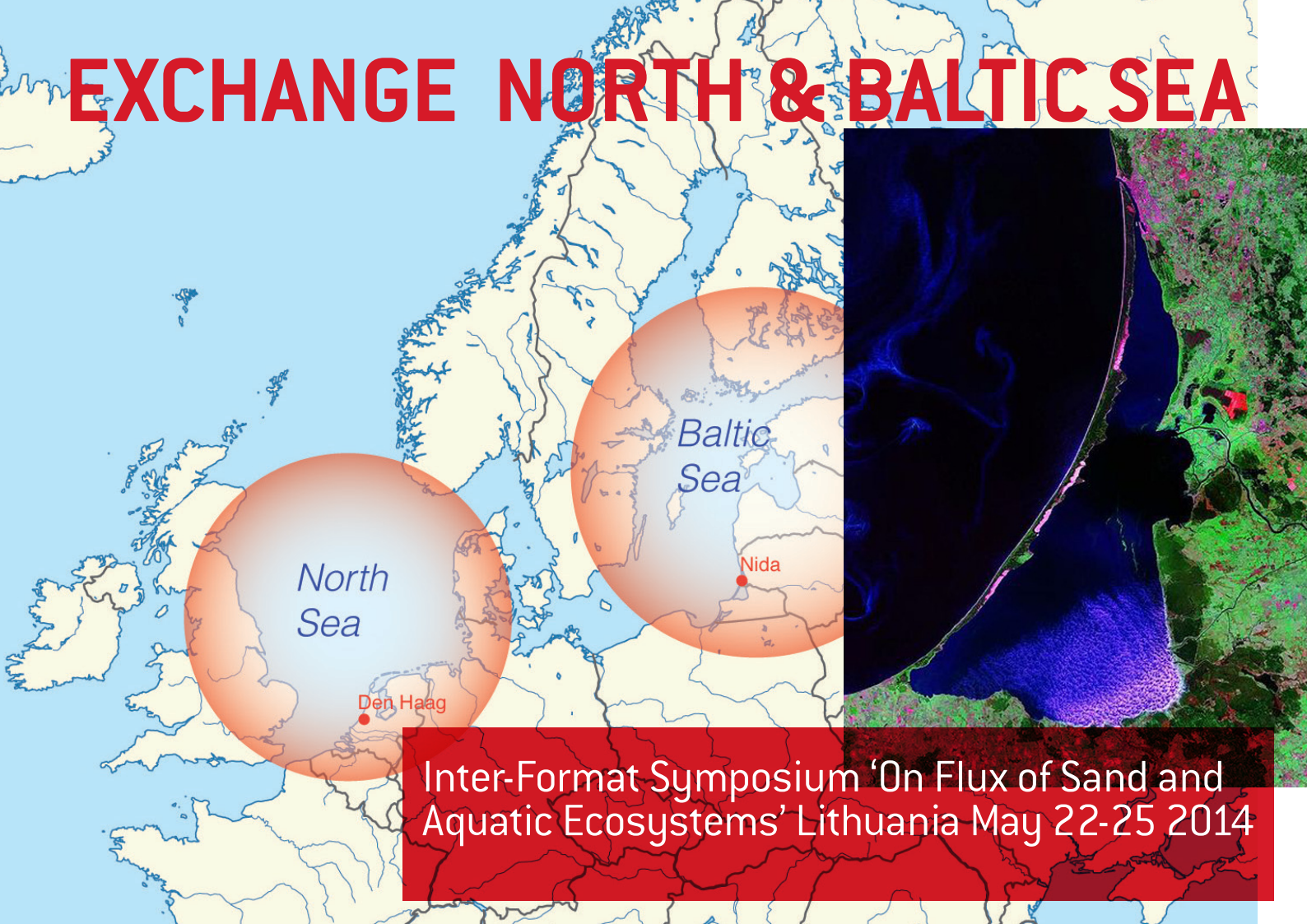
- PAUL CRUTZEN

# INTERNATIONAL COLLABORATIONS



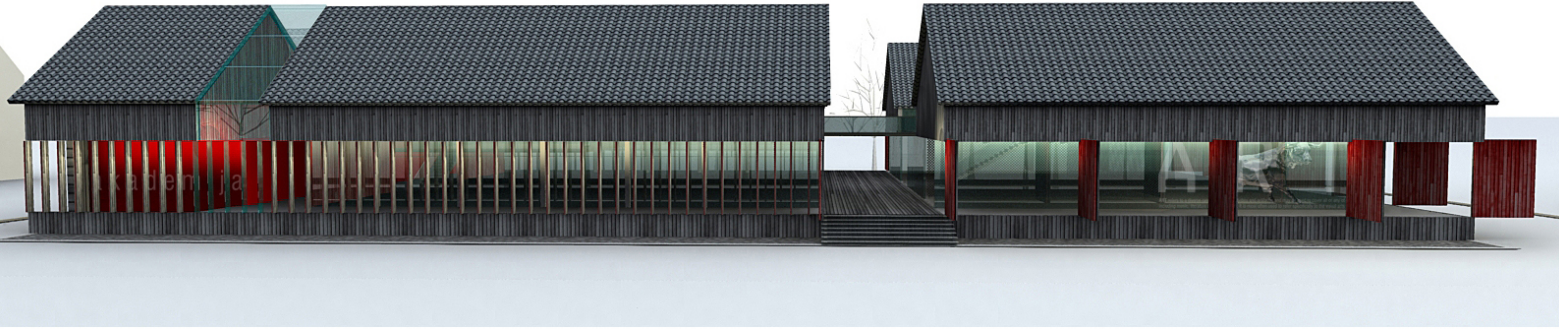
the future commons 2070

# EXCHANGE NORTH & BALTIC SEA



Inter-Format Symposium 'On Flux of Sand and Aquatic Ecosystems' Lithuania May 22-25 2014

# NIDA ART COLONY ARCHITECTURE



Local research + international exchange of arts  
and science = communication + education



Heb je altijd al aan zee werk willen maken?  
**MELD JE AAN VOOR 'LOCALS ONLY'!**  
Mail nu je werkvoorstel naar [satellietgroep@gmail.com](mailto:satellietgroep@gmail.com)  
en maak kans op een inspirerend werkverblijf in  
de artist in residence *Badgast* aan zee in Scheveningen.

# SATELLIET GROEP

SATELLIETGROEP DOET ONDERZOEK NAAR DE CULTURELE BETEKENIS VAN DE ZEE IN BINNEN- EN BUITENLAND

Voorjaar 2014 wandelen filosoof Bram Esser en  
ontwerper Francois Lombarts langs de kust op zoek naar  
*de oorsprong van het Nederlandse zand waarmee we onze*  
**kust beschermen:**  
**STEUN DEZE KUNSTREIS MET JOUW DONATIE!**

Meer informatie: [www.satellietgroep.nl](http://www.satellietgroep.nl)

Tot ziens bij de Noordzeeconferentie op 13 maart!